

# Grace Chun 천은경

Available Works List

Contact : [gracechunart@gmail.com](mailto:gracechunart@gmail.com)



## Grace Chun 천은경

Born in South Korea, Grace Chun is a burgeoning new talent in the field of abstract art. Displaying a purposeful sense of color and mood, Grace's abstract painting and portraiture have evoked praise for their beauty, originality and depth of expression. Grace works in New York City.

*I have always had a keen awareness of color in the world. Strong colors and subtle tones beat into my mind like rhythms and lyrics. As an artist I describe on canvas how I perceive the world through my own unique vocabulary of color. When light and hues combine on canvas, a celebration of the imagination ensues. I invite the viewer to enter and be present in that space; to contemplate the work for what it is and what it may represent; and to awake to the possibility of discovery and understanding.*

*-Grace Chun*



Grace Chun  
*The Lee*  
Mixed media on canvas  
36 x 36 inch  
\$ 4,000



Grace Chun  
*Himinn and Wine*  
Oil on Canvas  
48 x 60 inch  
\$ 7,000





Grace Chun  
*New World Harvest*  
Oil on Canvas  
40 x 30 inch  
\$ 4,000



Grace Chun  
*Light and Blinds*  
Oil on Canvas  
16 x 20 inch  
\$ 1,600





Grace Chun  
*Undiscovered*  
Oil on Canvas  
16 x 20 inch  
\$ 1,600



Grace Chun  
*Widening Path #2*  
Oil on Canvas  
16 x 20 inch  
\$ 1,600





Grace Chun  
*For My Daughter*  
Acrylic on Canvas  
24 x 24 inch (each)  
\$ 2,600 (each)



Grace Chun  
*Memory of Autumn*  
Oil on Canvas  
24 x 30 inch  
\$ 3,000



Grace Chun  
*Mood Sensors*  
Oil on Canvas  
30 x 30 inch  
\$ 3,600





Grace Chun  
*Mood Sensors #2*  
Oil on Canvas  
30 x 30 inch  
\$ 3,600





Grace Chun  
*Oriental Blue*  
Oil on Canvas  
36 x 36 inch  
\$ 4,000



Grace Chun  
*Variations on a Cubit*  
Oil on Canvas  
30 x 30 inch  
\$ 3,600





Grace Chun  
*Pointed Poem #1*  
Oil on Canvas  
40 x 30 inch  
\$ 4,000



Grace Chun  
*Pointed Poem #2*  
Oil on Canvas  
40 x 30 inch  
\$ 4,000





Grace Chun  
*Pointed Poem #3*  
Oil on Canvas  
40 x 30 inch  
\$ 4,000



Grace Chun  
*Voices in the Garden*  
Oil on Canvas  
40 x 30 inch  
\$ 4,000



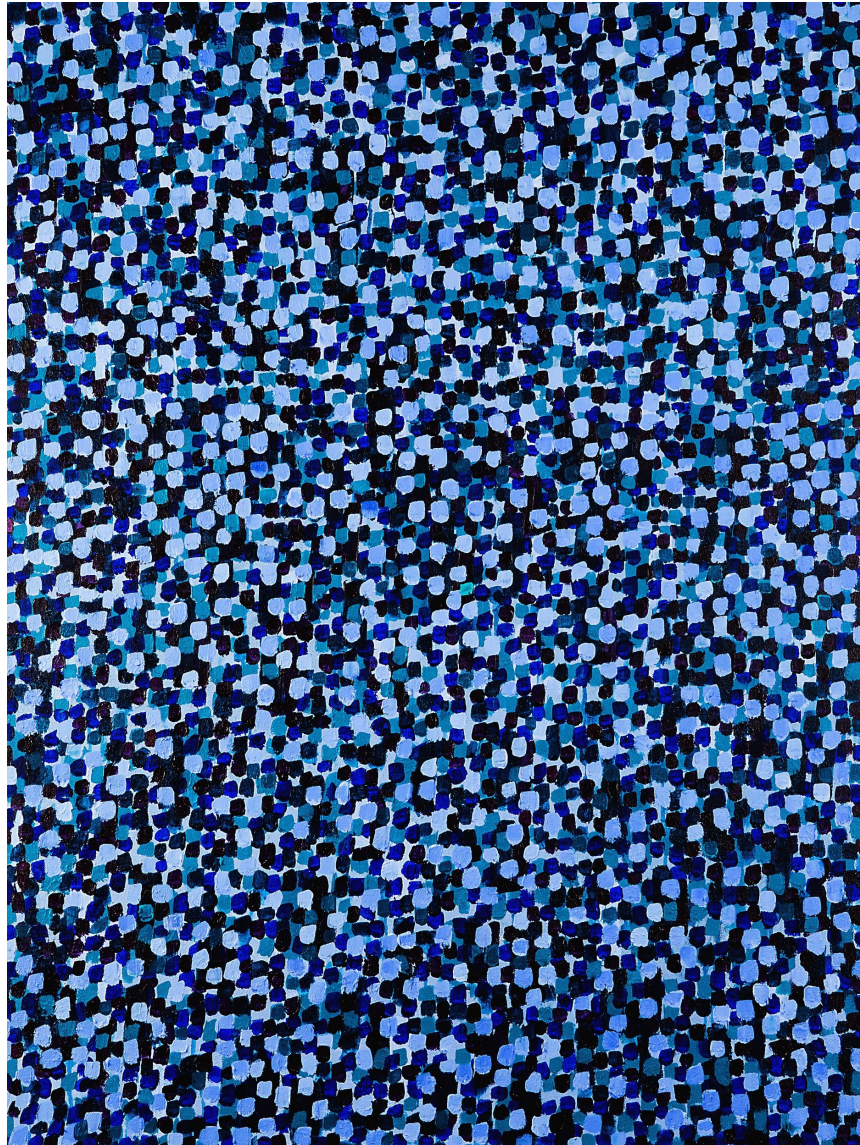


Grace Chun  
*Indigo Mod*  
Oil on Canvas  
48 x 30 inch  
\$ 4,000



Grace Chun  
*Spring Breathe*  
Oil on Canvas  
48 x 30 inch  
\$ 4,000





Grace Chun  
*Philo's Meditation*  
Oil on Canvas  
48 x 30 inch  
\$ 4,000



Grace Chun  
*Widening Path*  
Oil on Canvas  
40 x 60 inch  
\$ 5,000





Grace Chun  
*Blush of Dew*  
Oil on Canvas  
48 x 48 inch  
\$ 6,000



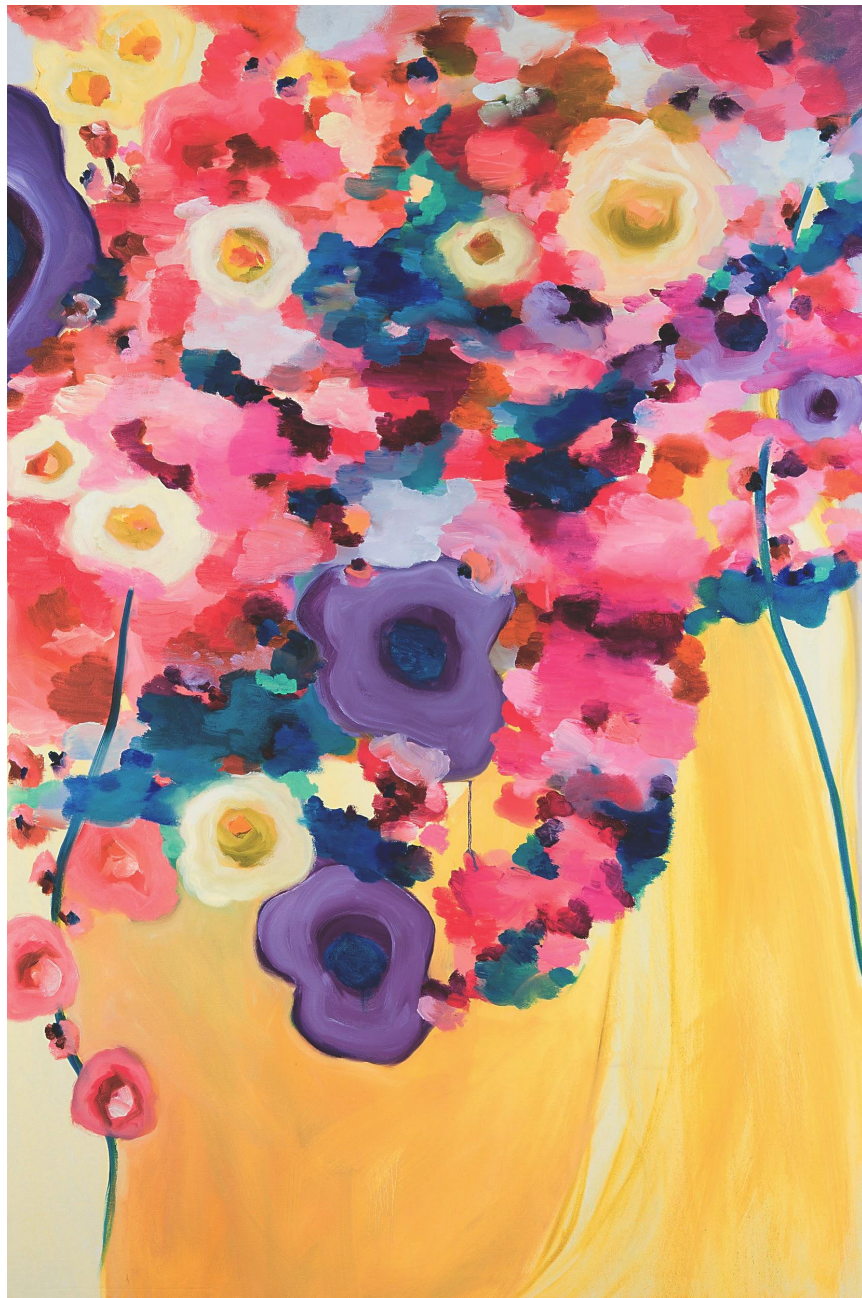


Grace Chun  
*Summer Rain*  
Oil on Canvas  
48 x 48 inch  
\$ 6,000



Grace Chun  
*Almost May 1*  
Oil on Canvas  
60 x 40 inch  
\$ 5,000





Grace Chun  
*Almost May 2*  
Oil on Canvas  
60 x 40 inch  
\$ 5,000





Grace Chun  
*Aeolian Palette*  
Oil on Canvas  
60 x 60 inch  
\$ 8,000



Grace Chun  
*Aeolian Palette #2*  
Oil on Canvas  
60 x 60 inch  
\$ 8,000





Grace Chun  
*Melba*  
Oil on Canvas  
36 x 36 inch  
\$ 4,000



Grace Chun  
*Getting There*  
Oil on Canvas  
24 x 24 inch  
\$ 2,600





Grace Chun  
*Way to winter*  
Oil on Canvas  
30 x 24 inch  
\$ 3,000



Grace Chun  
*Way to winter #2*  
Oil on Canvas  
30 x 24 inch  
\$ 3,000



Grace Chun  
*Indigo M*  
Oil on Canvas  
30 x 24 inch  
\$ 3,000





Grace Chun  
*More Than You Know*  
Oil on Canvas  
36 x 36 inch  
\$ 4,000



Grace Chun  
*No title*  
Oil on Canvas  
24 x 30 inch  
\$ 3,000



Grace Chun  
*No title*  
Oil on Canvas  
24 x 30 inch  
\$ 3,000





Grace Chun  
*No title*  
Oil on Canvas  
24 x 30 inch  
\$ 3,000

## Artist Statement

I paint from emotion. It is the most authentic inspiration to draw from and reference when painting. My work is also rooted in aesthetics.

Color is my chief concern. It makes light, and conveys feeling. Often, colors have a “sound” for me. They come alive through their particular combination on a canvas, just as an assembly of notes in a piece of music creates melody, mood and theme. I am not satisfied with a painting until i find the exact colors. I don't begin with a preconceived notion of all the colors i will use, rather my choice evolves as i paint and the overall theme emerges.

Nature, in a very broad sense, is my primary source of inspiration. In a non-intellectual way, I seek to translate and project thoughts, emotions and sensations onto the canvas. Light, color, texture and composition all have to meet at the moment and in the correct proportions to complete the work.

Rhythm is also essential to my work-the way one form or line to another. My years of study and training as a musician inform my painting. The interaction of movement, pause, energy, rhythm and the harmony of opposing forces all influence how I paint. With the gesture of every brush stroke, I hope to define a space on the canvas that, much like a musical composition, convey purity and truth as well as a sense of mystery, wonder and discovery.

Making art is a way of being present in the world. It is an act of focused attention; a moment of experience that illuminates, praises and celebrates the world and life.

## **C.V.**

### **GRACE CHUN**

#### **EDUCATION**

2017 Diploma of Fine Arts, National Academy Museum and School, NY

1988 B.A, andong National University, Andong, korea

#### **RECENT EXHIBITIONS**

2017 *Creative Mischief*, National Academy Museum, NY

*Spring Show*, Sonia Gechtoff Gallery, NY

2016 *Creative Mischief*, National Academy Museum, NY

*Black and White Perspectives: Works on Paper*, Sonia Gechtoff Gallery, NY

2015 *Mid-Year Exhibition*, Sonia Gechtoff Gallery, NY

*Year-End Exhibition*, Sonia Gechtoff Gallery, NY

*Creative Mischief*, National Academy Museum, NY

*I'self Portraits of Artists in their Absence*, National Academy Museum, NY

2014 *Mid-Year Exhibition*, Sonia Gechtoff Gallery, NY

*Year-End Exhibition*, Sonia Gechtoff Gallery, NY

*Creative Mischief*, National Academy Museum, NY